

2010

*Albuquerque CoolLOOP® Open
Basic Skills Competition*

July 10, 2010



Hosted by

Albuquerque Figure Skating Club

At

Outpost Ice Arena

9530 Tramway Blvd, NE • Albuquerque, NM 87122

Entries must be received by

May 29, 2010

Approved By



ALBUQUERQUE COOLLOOP® OPEN BASIC SKILLS COMPETITION

JULY 10, 2010

Hosted by the Albuquerque Figure Skating Club
Approved by U.S. Figure Skating
Chief Referee: Lisa Landon

Events to include:

**Snowplow Sam – Basic 8 Elements, Programs, and Artistic
Free Skate 1 - 6 Compulsory, Music, and Artistic
Adult Basic 1 - 4 Compulsory, Music, and Artistic**

This announcement is posted on Albuquerque Figure Skating Club's website at
www.abgfsc.org/aclo.htm

Location:

Outpost Ice Arena
9530 Tramway Blvd., N.E.
Albuquerque, NM 87122
Phone: 505-856-7595

For Information:

Registrar, Ann Moore
k2mom1218@yahoo.com

Registration Deadline:

Entries must be received by May 29, 2010.
Entries must be mailed to Ann Moore, P.O. Box 3723, Albuquerque, NM 87190

Rules and Conduct of the Competition: Unless otherwise stated in this Announcement, the Albuquerque CoolLOOP® Open Basic Skills Competition will be conducted in accordance with the rules and regulations of U.S. Figure Skating, as set forth in the 2010 Official U.S. Figure Skating Rulebook, the changes and revisions approved by the Governing Council, all updates/corrections posted on the U.S. Figure Skating website, and the U. S. Figure Skating 2009-2010 Basic Skills Competition Manual.

Eligibility Rules for Participants: The competition is open to ALL skaters who are current eligible (ER 1.00) members of either the Basic Skills Program and/or are full members of U.S. Figure Skating. To be eligible, skaters must have submitted a membership application or be a member in good standing. Members of other organizations are eligible to compete but must be registered with the host Basic Skills Program/Club or any other Basic Skills Program/Club.

Eligibility will be based on skill level as of May 29, 2010. All SNOWPLOW SAM and BASIC SKILLS SKATERS THROUGH BASIC 8 are eligible to skate at highest level passed OR one level higher BUT not both levels in the same event, and NO official U.S. Figure Skating tests may have been passed including MIF or individual dances.

For Free skate 1-6 and Adult 1-4, eligibility will be based only upon highest free skate test level passed (MIF test level will not determine skater's competitive level). All FREE SKATE 1-6 and ADULT 1-4 SKATERS are eligible to skate at highest level passed OR one level higher BUT not both levels in the same event.

Entries/Deadline/Refunds: Competition entries **must be received by May 29, 2010. We will not accept entries that require signature for delivery.** Late entries may be accepted at the discretion of the Referee and the Competition Committee and only if accompanied by a \$30 late fee. The Competition Committee reserves the right to limit entries in any event or to cancel any event due to time restrictions. Entry fees will not be refunded after May 29, 2010 unless an event entered is canceled. Two entries will constitute an event. For purposes of this paragraph, a skater's choice to skate as the sole entrant will also constitute an event.

Facility: Outpost Ice Arena has two indoor ice surfaces measuring 85' x 196' with rounded corners and two connecting ice surfaces measuring approximately 30' x 128'. A snack bar and pro shop will be available. Spectator seating is also available, and no admission will be charged.

Liability: U.S. Figure Skating and the Albuquerque Figure Skating Club undertake no responsibility for damages or injuries suffered by the skaters or officials. As a condition of, and in consideration of the acceptance of their entries or participation, all entrants, their parents and guardians, and officials shall be deemed to agree to assume all risks of injury to their person and property resulting from, caused by, or connected with, the conduct and management of the competition, and to waive and release any and all claims which they may have against any officials, U.S. Figure Skating, the Albuquerque Figure Skating Club, and against its officers. Entries shall be accepted only on such condition.

Registration: The registration desk will be open in the lobby of the Outpost Ice Arena Friday evening, July 9th and prior to the beginning of the events on Saturday, July 10th. Specific times will be provided with your notification of event and practice ice times.

Practice Ice: Practice ice will be available starting Friday evening, July 9th. Depending on the size of the competition, additional practice ice may be scheduled on Friday afternoon. Practice ice will cost \$12.00 for each 20-minute session. See Registration form for more information. We cannot guarantee that practice ice will be on the same ice surface as the skater's event. Practice ice fees will not be refunded after May 29, 2010 unless an event entered is canceled.

Awards: Awards will be made as soon as possible after the conclusion of each event. Medals will be given to all skaters in each event.

Photography: Professional action shots may be available for purchase. Personal cameras will be permitted in the awards area and bleachers only and may not be plugged into arena outlets. Flash photography is permitted in the awards area only. No flash photography is permitted in the arena.

Music: All competitors with a program skated to music must provide their own music on a CD-R. Tapes and CD-RW will not be accepted. CDs must be plainly marked with the competitor's name and event. Only one track may be recorded. A spare CD must be readily available for emergencies. Music must be turned in at time of registration. Music will not be played on practice ice.

Advertisements: We welcome program advertising. Deadline for camera-ready ads is May 29, 2010. Please see page 10 for details.

Official Notices: An Official Bulletin Board will be maintained at Outpost Ice Arena. Each competitor and coach is expected to check this board for the official times of events and/or

changes in schedules. Notices posted on the Official Bulletin Board will be considered sufficient notice to all competitors, parents, professionals, and officials. Competitors should check in with the Ice Monitor forty-five (45) minutes prior to the scheduled time of their events. Events may run up to 15 minutes early without posting notice of a schedule change.

Hotels: Due to the proximity and availability of hotel accommodations, we are not using an official hotel. Hotels nearest to the Outpost Ice Arena include:

Sandia Resort and Casino, 30 Rainbow Road, NE (I-25, exit 234), Albuquerque, NM 87113, 877-272-9199

Ramada Limited, 5601 Alameda Blvd., N.E. (I-25, exit 233), Albuquerque, NM 87113, 800-272-6232

Holiday Inn Express, 5401 Alameda Blvd, N.E. (I-25, exit 233), Albuquerque, NM 87113, 888-315-2621

Staybridge Suites North, 5817 Signal Ave. NE (I-25, exit 233), Albuquerque, NM 87113, 800-225-1237

Comfort Inn & Suites, 5811 Signal Ave., NE (I-25, exit 233), Albuquerque, NM 87113, 877-424-6423

Albuquerque Marriott Pyramid North, 5151 San Francisco Rd., NE (I-25, exit 232), Albuquerque, NM 87109, 800-262-2043

Motel 6 Albuquerque North, 8510 Pan American Freeway, NE (I-25, exit 232), Albuquerque, NM 87113, 800-466-8356

All listed hotels are 5 to 7 miles from the Outpost Ice Arena. Other accommodations are available farther south along I-25.

ENTRY FEES

First Singles Event	\$45.00
Artistic Duet as Only Event *	\$22.50 per skater
Each Additional Event.....	\$15.00 per skater

* Applies only if no Singles event has been entered

Send application forms and fees to:

Ann Moore
P.O. Box 3723
Albuquerque, NM 87190

Please make checks payable to AFSC.

Please provide an email address so we may notify you of event and practice ice times. If you wish to be notified by mail, you must include a self-addressed stamped letter-sized envelope. If no email address or stamped envelope is provided, you will not be notified. The Practice Ice and Competition schedule will be posted as soon as each is available on our website at www.abqfsc.org/aclo.htm. A service charge of \$30.00 will be added to any returned checks. Payment by money order or cash covering fees and service charge will be required in these cases.

COMPETITION EVENTS:

Two entries in a division will constitute an event. Groups will be divided by age within each level depending on number of competitors. The competition committee may combine male and female competitors at the same level to make events. If there is only one entrant in an event, the competitor may choose to skate and receive first place. The competitor may also choose to

have the event cancelled, in which case the entry fee will be refunded. Refund will be \$45 if the cancelled event was the skater's only event or \$15 if the skater is competing in another event.

SNOWPLOW SAM AND BASIC 1 - 8

ELEMENTS EVENT: Each skater will have the option to perform one element at a time **in the order listed** (no excessive connecting steps) or will perform each element when directed by a judge or referee. Programs will be skated on 1/3 to 1/2 ice with no music. Time: 1:00 or less.

PROGRAM EVENT: Programs will be skated on full ice to music. Vocal music is allowed. The skating order of the required elements is optional. The elements are not restricted as to the number of times the element is executed or length of glides, number of revolutions, etc. unless otherwise specified. The skater must demonstrate the required elements and may use elements from a previous level. A .2 deduction will be taken for each element performed from a higher level. Time: 1:00 +/- 10 seconds.

Required Elements for Snowplow Sam and Basic 1 – 8 Elements Events and Freeskate Program Events:

<p><u>Snowplow Sam - Tots</u></p> <ol style="list-style-type: none"> 1. March followed by a two foot glide and dip 2. Forward two foot swizzles 2-3-in a row 3. Forward snowplow stop 4. Backward wiggles 2-6 in a row 	<p><u>Basic 5</u></p> <ol style="list-style-type: none"> 1. Backward outside edge on a circle clockwise or counterclockwise 2. Backward crossovers 6-8 consecutive in both directions 3. One foot spin -min of three revolutions 4. Hockey stop 5. Side Toe hop -either direction
<p><u>Basic 1</u></p> <ol style="list-style-type: none"> 1. Forward two foot glide 2. Forward two foot swizzles 6 -8 in a row 3. Forward snowplow stop 4. Backward wiggles 6-8 in a row 	<p><u>Basic 6</u></p> <ol style="list-style-type: none"> 1. Forward inside 3-turn - R & L from a standstill 2. Bunny Hop 3. Forward arabesque spiral on a straight line - R or L 4. Lunge - R or L 5. T-stop - R or L
<p><u>Basic 2</u></p> <ol style="list-style-type: none"> 1. Forward one foot glide - either foot 2. Forward alternating ½ swizzle pumps, in a straight line across width of ice 3. Two foot turn in place - forward to backward 4. Backward two foot swizzles 6 - 8 in a row 5. Moving snowplow stop 	<p><u>Basic 7</u></p> <ol style="list-style-type: none"> 1. Forward inside open Mohawk - R to L & L to R 2. Ballet Jump either direction 3. Back crossovers to a back outside edge landing position clockwise and counter clockwise 4. Forward inside pivot
<p><u>Basic 3</u></p> <ol style="list-style-type: none"> 1. Forward stroking 2. Forward ½ swizzle pumps on a circle, either clockwise or counter clockwise 6 -8 consecutive 3. Moving forward to backward two foot turn in either direction 4. Backward one foot glide - either foot 5. Two foot spin <p>See Next Page for Basic 4</p>	<p><u>Basic 8</u></p> <ol style="list-style-type: none"> 1. Moving forward outside or forward inside three turns R & L 2. Waltz jump 3. Mazurka in either direction 4. Combination move - clockwise or counter clockwise - two forward crossovers into FI Mohawk, step behind, step into one back crossover and step to a forward inside edge 5. Beginning one-foot upright spin - optional free foot position

<p>Basic 4</p> <ol style="list-style-type: none"> 1. Forward outside 3 turn -R & L from a standstill 2. Forward outside edge on a circle clockwise or counter clockwise 3. Forward crossovers 6-8 consecutive both directions 4. Backward stroking 5. Backward snowplow stop - R or L 	
---	--

FREE SKATE 1-6

COMPULSORY EVENT: Elements will be skated in program form, using a limited number of connecting steps on 1/2 ice with no music. The skating order of the required elements is optional. **The skater must demonstrate the required elements and may use but is not required to use any additional elements from previous levels.** A .2 deduction will be taken for each element performed from a higher level. Time: 1:15 or less.

Required Elements for Free Skate 1 – 6 Compulsory Events:

<p><u>Free skate level 1</u></p> <ol style="list-style-type: none"> 1. Advanced forward stroking - 4-6 consecutive 2. Basic forward outside edges and forward inside consecutive edges -2-4 outside and 2-4 inside 3. Scratch spin from backward crossovers 4. Waltz jump from backward crossovers 5. Half flip jump 	<p><u>Free skate level 4</u></p> <ol style="list-style-type: none"> 1. Spiral sequence, FI Spiral, FI Mohawk, BO spiral, clockwise or counter clockwise 2. Forward power 3's, 2-3 consecutive sets-R or L 3. Sit spin 4. Loop jump 5. Waltz jump/loop jump
<p><u>Free skate level 2</u></p> <ol style="list-style-type: none"> 1. Forward outside spiral - R or L. and a forward inside spiral - R or L 2. Waltz Three's - R or L 3. Beginning back spin - entry optional 4. Waltz jump, side toe hop, waltz jump series 5. Toe loop jump 	<p><u>Free skate level 5</u></p> <ol style="list-style-type: none"> 1. Spiral sequence, FO spiral, forward outside 3 turn, one backward crossover, backward inside spiral 2. Camel spin 3. Forward upright spin to back upright spin 4. Loop/loop jump 5. Flip jump
<p><u>Free skate level 3</u></p> <ol style="list-style-type: none"> 1. Forward crossovers in a figure 8 2. Advanced forward outside swing rolls 4 - 6 consecutive 3. Back spin 4. Salchow jump 5. Waltz jump/toe loop or Salchow/toe loop 	<p><u>Free skate level 6</u></p> <ol style="list-style-type: none"> 2. Five step Mohawk sequence -1 set alternating pattern (refer to Basic Skills Curriculum Free skate 6) 3. Camel, sit spin combination - minimum of 4 revolutions total 4. Split jump or stag jump 5. Waltz jump, 1/2 loop, Salchow combination 6. Lutz jump

MUSIC EVENT: Programs will be skated on full ice to music. Vocal music is allowed. The skating order of the required elements is optional. The elements are not restricted as to the number of times element is executed, or length of glides, number of revolutions, etc. unless otherwise stated. The skater must demonstrate the required elements and may use but is not required to use any additional elements from previous levels. A .2 deduction will be taken for

each element performed from a higher level. Connecting moves and steps should be demonstrated throughout the program. Time 1:30 +/- 10 seconds.

Required Elements for Free Skate 1 – 6 Music Events:

<p><u>Free skate level 1</u></p> <ol style="list-style-type: none"> 1. Advanced forward stroking - 4-6 strokes 2. Scratch spin from backward crossovers 3. Waltz jump from backward crossovers 4. Half flip jump 	<p><u>Free skate level 4</u></p> <ol style="list-style-type: none"> 1. Forward power 3's, 2-3 consecutive sets-R or L 2. Sit spin 3. Loop jump 4. Waltz jump/loop jump
<p><u>Free skate level 2</u></p> <ol style="list-style-type: none"> 1. Forward outside spiral - R or L 2. Beginning back spin 3. Waltz jump, side toe hop, waltz jump series 4. Toe loop jump 	<p><u>Free skate level 5</u></p> <ol style="list-style-type: none"> 1. Camel spin 2. Forward upright spin to back upright spin 3. Loop/loop combination jump 4. Flip jump
<p><u>Free skate level 3</u></p> <ol style="list-style-type: none"> 1. Forward crossovers in a figure 8 2. Back spin 3. Salchow jump 4. Waltz jump/toe loop or Salchow/toe loop 	<p><u>Free skate level 6</u></p> <ol style="list-style-type: none"> 1. Camel, sit spin combination - minimum of 4 revolutions total 2. Split jump or stag jump 3. Waltz jump, 1/2 loop, Salchow combination 4. Lutz jump

ADULT 1 - 4

COMPULSORY EVENT: Each skater will perform one element at a time **in the order listed** in a simple program format with no excessive connecting steps. Programs will be skated on 1/2 ice with no music. Time: 1:00 +/- 10 seconds.

MUSIC EVENT: Programs will be skated on full ice to music. Vocal music is allowed. The skating order of the required elements is optional. The elements are not restricted as to the number of times the element is executed or length of glides, number of revolutions, etc. unless otherwise specified. The skater must demonstrate the required elements and may use elements from a previous level. A .2 deduction will be taken for each element performed from a higher level. Time: 1:40 max.

Required Elements for Adult 1 – 4 Elements Events and Program Events:

<p><u>Adult 1</u></p> <ol style="list-style-type: none"> 1. Forward Swizzles 4-6 in a row 2. Backward Swizzles 4-6 in a row 3. Forward 1-foot glide R&L 4. Two foot turn in place 5. Snowplow stop 	<p><u>Adult 3</u></p> <ol style="list-style-type: none"> 1. Inside Mohawk either direction 2. Backward crossovers, clockwise and counter clockwise 3. Basic forward outside and forward inside edges – 4 of each 4. Two-foot spin – entry optional
<p><u>Adult 2</u></p> <ol style="list-style-type: none"> 1. Forward Crossovers, clockwise and counter clockwise 2. Moving 2-foot turn on a curve both directions 3. Backward 1-foot glide R&L 4. Forward Pivot 	<p><u>Adult 4</u></p> <ol style="list-style-type: none"> 1. Forward Outside 3-Turns R&L 2. Forward Inside 3-Turns R&L 3. Perimeter stroking with crossover end pattern 4. Power 3-turns one direction only, set of 3

ARTISTIC SINGLES AND ARTISTIC DUET PROGRAMS:

Male and female entrants will compete together in artistic events. Vocal music is permitted. Performances will be judged from an entertainment standpoint, for theatrical and artistic qualities. Technical skating skills and difficulty will not be rewarded as such; however, skating must be the major element of the performance and be of sufficient quality to support the selected theatrical elements. Unintended falls, poorly executed skating elements and obvious losses of control will reduce contestant's marks. Theatrical elements evaluated will include energy, poise, acting, pantomime, eye contact, choreography, form/extension and the use of props and ice. Single jumps only. No axels and no flying spins are allowed. Levels may be combined to make events.

Costumes should reflect the character of the music, be in good taste, and not present a safety hazard to the skater or others. Hand held and/or on-ice props that meet the following restrictions may be used. A hand held prop is one that the skater can hold and skate with. The prop may be placed on the ice and/or picked up by the skater at any point in the program. Props must not present a danger to the skater, the ice surface, or any other person or property. A skater may not use live props, fire, water, smoke, explosives of any nature, or any other item that could cause a change in the ice surface or present a hazard. If a prop is to be on the ice at the beginning of a skater's program, the skater may take only 10 seconds from the time his or her name is called to set up the prop on the ice surface, and the skater must push or carry it on and off the ice without assistance. No debris may be left on the ice. Only hand held props that do not impede other skaters may be used on practice ice and warm up.

Maximum skating time for All Artistic programs (both Singles and Duets) is 1:30.

Artistic Duets

An artistic duet may consist of skaters at different levels or ages. Such a duet must enter the event for the higher skater's level. Duets may be mixed or same gender. Levels may be combined at the discretion of the referee.

**ALBUQUERQUE COOLLOOP® OPEN BASIC SKILLS COMPETITION
ENTRY FORM – PAGE 1 OF 2**

NAME: _____ DOB: _____ GENDER: __ M __ F
 E-MAIL: _____ PHONE #: _____
 ADDRESS: _____ CITY/STATE/ZIP _____
 U.S. Figure Skating Number: _____ Highest Level Passed _____
 Name of Basic Skills Program and/or Club Affiliation: _____
 Director/Instructor: _____ Phone #: _____ Email: _____

EVENT AND PRACTICE ICE FEE SUMMARY:

EVENT	FEE/ SKATER	NUMBER	TOTAL
First Event	\$45.00		
Additional Events	\$15.00		
Artistic Duet as Only Event	\$22.50		
Total Amount Due for Competition Events			
Total Amount Due for Practice Ice			

Please make all checks payable to **Albuquerque Figure Skating Club (or AFSC)**
 Mail all entry and practice ice forms and fees (**separate checks for practice ice please**) to:

**Ann Moore
 P.O. Box 3723
 Albuquerque, NM 87190**

CERTIFICATION OF COMPETITOR: I understand that this entry must be in the hands of the Competition Committee by May 29, 2010 and I have read the announcement and understand the rules and policies contained therein. The competition committee reserves the right to limit the number of entries accepted or cancel an event due to time constraints. The Competitor is eligible to enter the events indicated on page 2 of this entry form. It is agreed that the competitor and family hold the Outpost Ice Arena Basic Skills Program, the Outpost Ice Arena, and the Albuquerque Figure Skating Club harmless from any and all liability either during practice or the competition, and from any and all liability for damages to or loss of property. If this entry is incomplete, I will accept a collect phone call to complete my entry. A parent or guardian must sign this release if competitor is under 21 years of age.

Competitor's Signature _____ Date _____
 Parent or Guardian's Signature _____ Date _____
 Instructor/Coach Signature _____ Date _____
 Program Director/Club Officer Signature _____ Date _____

**If you have additional questions, you may contact Ann Moore by email or phone after 7:00 p.m. MDT.
 k2mom1218@yahoo.com
 505-266-4539**

COMPETITION EVENTS – Please indicate your choices by filling in the appropriate bullets:

PE: Program Event EE: Elements Event A: Artistic AD: Artistic Duet (Please state partner's name on line at end of column)	ME: Music Event CE: Compulsory Event A: Artistic AD: Artistic Duet (Please state partner's name on line at end of column)
Snowplow Sam <input type="radio"/> PE <input type="radio"/> EE <input type="radio"/> A <input type="radio"/> AD	Freeskate Level 1 <input type="radio"/> ME <input type="radio"/> CE <input type="radio"/> A <input type="radio"/> AD
Basic 1 <input type="radio"/> PE <input type="radio"/> EE <input type="radio"/> A <input type="radio"/> AD	Freeskate Level 2 <input type="radio"/> ME <input type="radio"/> CE <input type="radio"/> A <input type="radio"/> AD
Basic 2 <input type="radio"/> PE <input type="radio"/> EE <input type="radio"/> A <input type="radio"/> AD	Freeskate Level 3 <input type="radio"/> ME <input type="radio"/> CE <input type="radio"/> A <input type="radio"/> AD
Basic 3 <input type="radio"/> PE <input type="radio"/> EE <input type="radio"/> A <input type="radio"/> AD	Freeskate Level 4 <input type="radio"/> ME <input type="radio"/> CE <input type="radio"/> A <input type="radio"/> AD
Basic 4 <input type="radio"/> PE <input type="radio"/> EE <input type="radio"/> A <input type="radio"/> AD	Freeskate Level 5 <input type="radio"/> ME <input type="radio"/> CE <input type="radio"/> A <input type="radio"/> AD
Basic 5 <input type="radio"/> PE <input type="radio"/> EE <input type="radio"/> A <input type="radio"/> AD	Freeskate Level 6 <input type="radio"/> ME <input type="radio"/> CE <input type="radio"/> A <input type="radio"/> AD
Basic 6 <input type="radio"/> PE <input type="radio"/> EE <input type="radio"/> A <input type="radio"/> AD	
Basic 7 <input type="radio"/> PE <input type="radio"/> EE <input type="radio"/> A <input type="radio"/> AD	Adult 1 <input type="radio"/> ME <input type="radio"/> CE <input type="radio"/> A <input type="radio"/> AD
Basic 8 <input type="radio"/> PE <input type="radio"/> EE <input type="radio"/> A <input type="radio"/> AD	Adult 2 <input type="radio"/> ME <input type="radio"/> CE <input type="radio"/> A <input type="radio"/> AD
Partner for Artistic Duet: _____	Adult 3 <input type="radio"/> ME <input type="radio"/> CE <input type="radio"/> A <input type="radio"/> AD
	Adult 4 <input type="radio"/> ME <input type="radio"/> CE <input type="radio"/> A <input type="radio"/> AD
	Partner for Artistic Duet: _____

PRACTICE ICE

Please indicate practice ice sessions desired. One session on Friday evening and one session on Saturday may be purchased prior to registration. Sessions will be 20 minutes long. Additional practice ice, if available, may be purchased at registration.

Price/Session	Friday	Saturday	Total
\$12.00			
Total Amount Due for Practice Ice			

2010 ALBUQUERQUE COOLLOOP® OPEN BASIC SKILLS COMPETITION
Program Advertising Order Form
Copy Deadline: May 29, 2010

Please join in supporting the 2010 Albuquerque CoolLOOP® Open Basic Skills Competition by purchasing advertising space in our competition program. Program ads are a great way to advertise your business or wish a family member, friend, or co-worker good luck.

The program is approximately 7 inches by 8½ inches. A full page ad is approximately 6 inches by 7½ inches. Sizes and prices are:

_____ Full back outside cover	\$100
_____ Full back inside cover	\$80
_____ Full front inside cover	\$80
_____ Full interior page	\$75
_____ Half interior page	\$40
_____ Quarter interior page	\$25
_____ Business card size (3 ½ x 2)	\$15

Any size ad may be used as a Good Luck ad. Create your own or let us make it simple. See next page for easy options to send your best wishes to your favorite skater.

Total amount enclosed \$_____

If you would like your business card to appear in the program, please enclose your card when you return this form. **DO NOT STAPLE THE CARD OR AD TO THE FORM!**

Please make your check or money order payable to the Albuquerque Figure Skating Club or AFSC.

Name: _____ email: _____

Address/City/State/Zip: _____

Phone: () _____ Alternate phone: _____

Send your payment along with the *correctly sized, black on white**, camera-ready art or your selections as indicated on next page to:

Laney Kidd
P. O. Box 40428
Albuquerque, NM 87196

*Business cards to be copied as ads need not be black on white. However, the card will appear in the program in black and white.

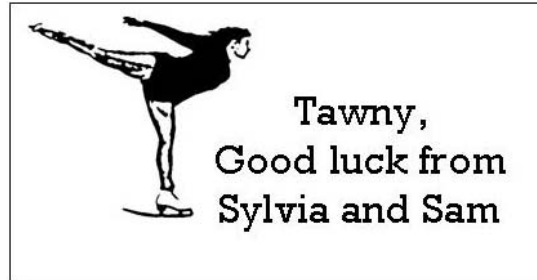
Ads must be received by May 29, 2010. Ads that are not camera-ready (including size as specified) will result in a \$25 handling fee. Ads in .jpg, .bmp, .gif, .ppt, etc. files can be emailed to Rdkidd@aol.com.

If you have any questions, please email Laney Kidd at Rdkidd@aol.com.

Good Luck Ads

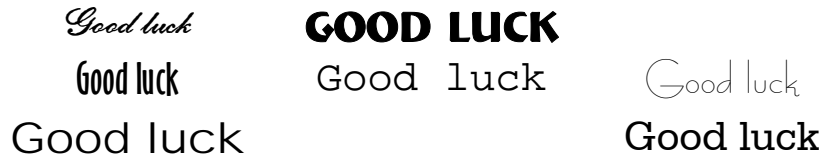
We are offering family and friends of competitors an extra opportunity to wish them good luck in the official competition program. You may select your artwork below and write in your message.

Examples:



Step 1: Write your message below (The font size will be altered to fit the size of your ad.)

Step 2: Select your font style (circle one) (The font size will be altered to fit the size of your ad.)



Step 3: Select your artwork (circle one) (The artwork size will be altered to fit the size your ad.)



Step 4: Send this page with your program advertising order form.